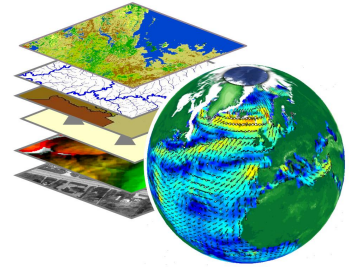




# VtEscape

**VtEscape** (standing for *Earth Surface Conditions And Parameters*) is an application that produces thematic geocoded maps from Earth observation and forecast data found on specialized sites of the Web or internal collections. VtEscape finds geolocated data in a given time interval that overlap fully or partially the bounding box of a given AOI (Area Of Interest) that may be the whole world. The spacemaps in output are produced according to standard geocoded formats like GeoTIFF or KML (Keyhole Markup Language). These formats may be immediately used as layers in most GIS (Geographical Information Systems) or virtual globes like Google Earth.

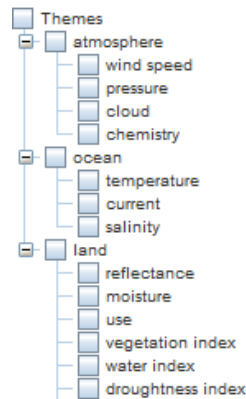
## VtEscape



According to the required dataset, VtEscape identifies the sites providing data in the field, transfers these data through HTTP or FTP protocols, decodes these transferred files and dresses a map according to the rendering parameters set by user. The geocoded map is displayed by selecting it in the result table and then pressing display, which adds this map as a new layer on the chosen virtual globe.

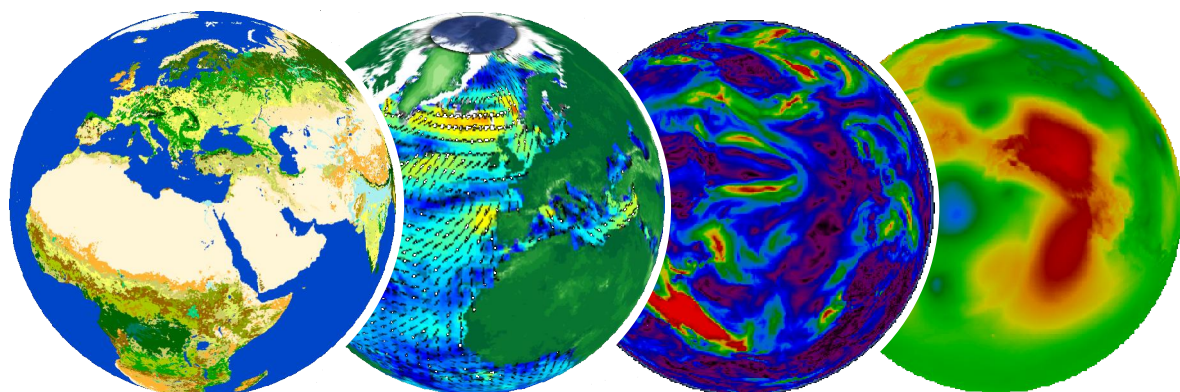
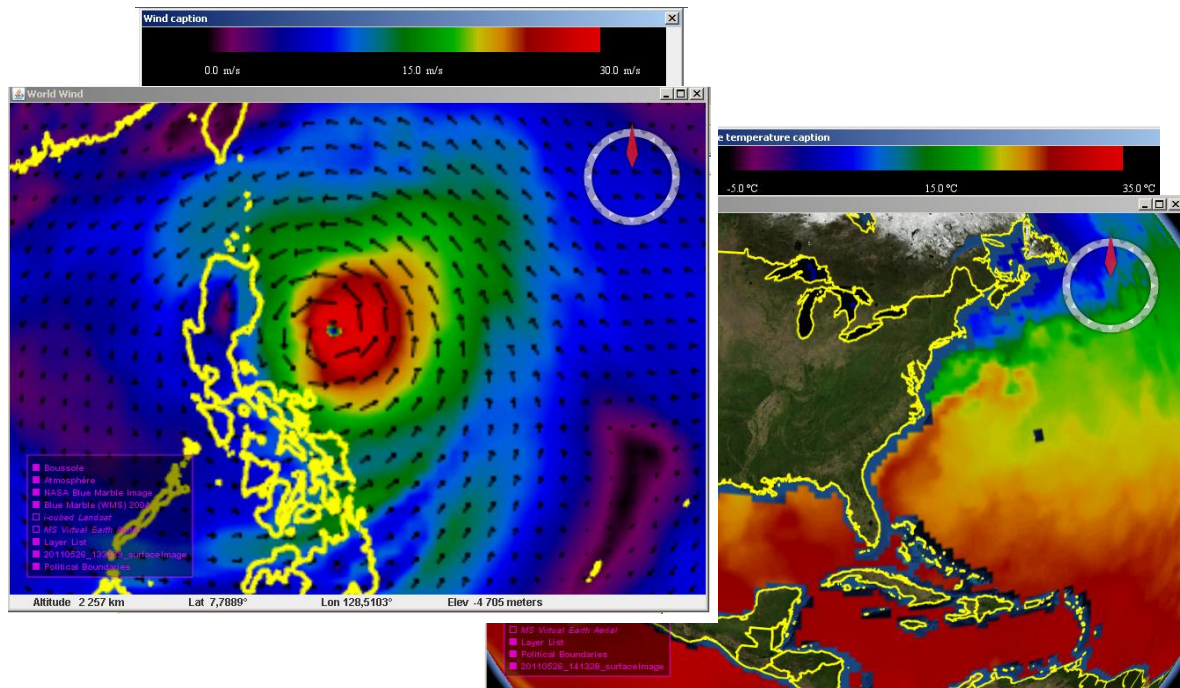
In its first release, VtEscape get free data from worldwide servers within the following themes:

- atmosphere
  - wind field
  - pressure
- ocean
  - temperature (SST)
  - currents
- land
  - use



The next releases should address the themes listed in the attached figure.

| Source       | Data time start     | Data time stop      | Type     | Process status |
|--------------|---------------------|---------------------|----------|----------------|
| ECMWF - wind | 09/02/2011 12:00:00 | 09/02/2011 12:00:00 | forecast | unprocessed    |
| ECMWF - wind | 10/02/2011 12:00:00 | 10/02/2011 12:00:00 | forecast | unprocessed    |
| ECMWF - wind | 11/02/2011 12:00:00 | 11/02/2011 12:00:00 | forecast | unprocessed    |
| ECMWF - wind | 12/02/2011 12:00:00 | 12/02/2011 12:00:00 | forecast | unprocessed    |
| ECMWF - wind | 06/02/2011 12:00:00 | 06/02/2011 12:00:00 | forecast | unprocessed    |
| ECMWF - wind | 05/02/2011 12:00:00 | 05/02/2011 12:00:00 | forecast | displayed      |
| ECMWF - wind | 04/02/2011 12:00:00 | 04/02/2011 12:00:00 | forecast | unprocessed    |



## VisioTerra

14 rue Albert Einstein  
77420 Champs-sur-Marne  
France

tel : +33 9 61 30 66 28  
fax : +33 1 64 62 08 97  
GSM : +33 6 07 84 84 56

<http://www.visioterra.fr>