

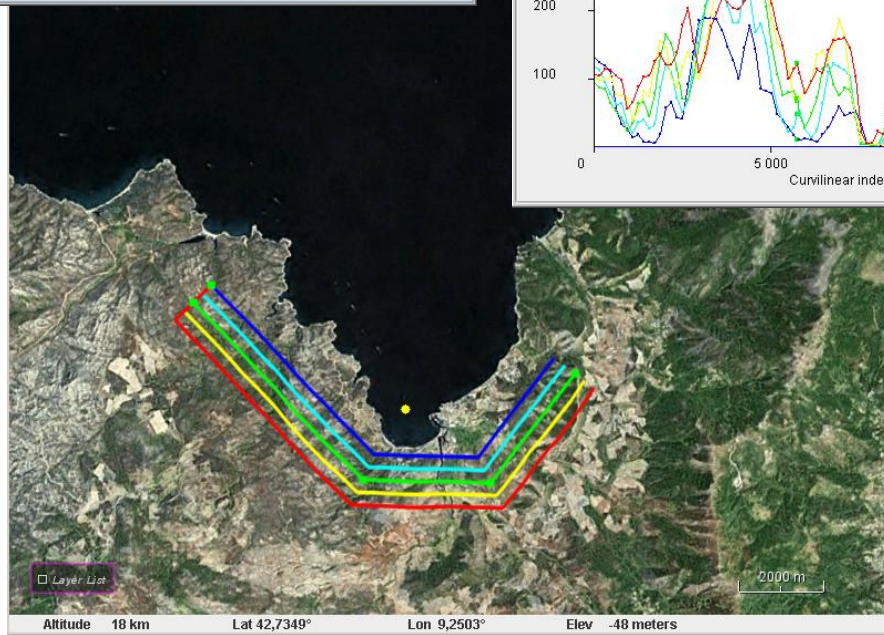
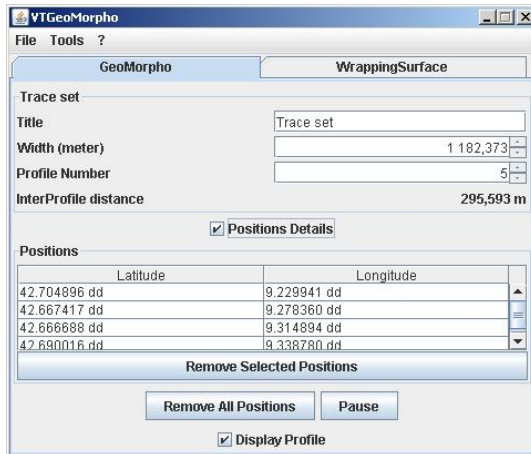
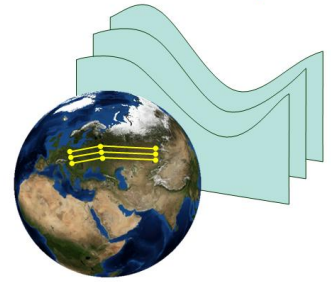


VT Geomorpho

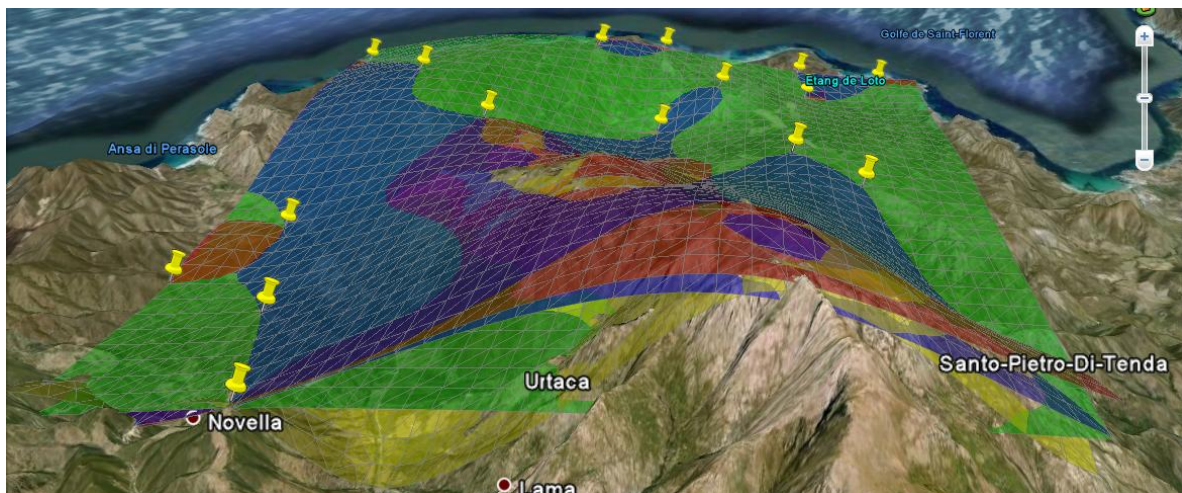
VTGeomorpho is an application able to scan the terrain capturing altimetry values and displaying serial profiles. Altimetry values are extracted from the SRTM database or from other altimetry references. VTGeomorpho is also able to compute wrapping surfaces interpolating the local maxima or the local minima.

Each line drawn on the Earth surface defines a so-called "profile". These profiles are located inside a "corridor" which width may be set by user. "Serial profiles" are defined by parallel lines inside the corridor. The number of profiles may be set by the user, these two options giving control of topographic scans density.

VT Geomorpho



Furthermore, VTGeomorpho enables users to create wrapping surfaces from the profiles' corridor, from a drawn or a hand-written bounding box. This surface interpolates all local extrema (either maxima or minima) according to an altimetry database (for example the SRTM VTCollection data).



VisioTerra

14 rue Albert Einstein
77420 Champs-sur-Marne
France

tel : +33 9 61 30 66 28
fax : +33 1 64 62 08 97
GSM : +33 6 07 84 84 56

<http://www.visioterra.fr>