



VT Tile Grabber

VT Tile Grabber is an application enabling to capture the information displayed during your session on a virtual globe.

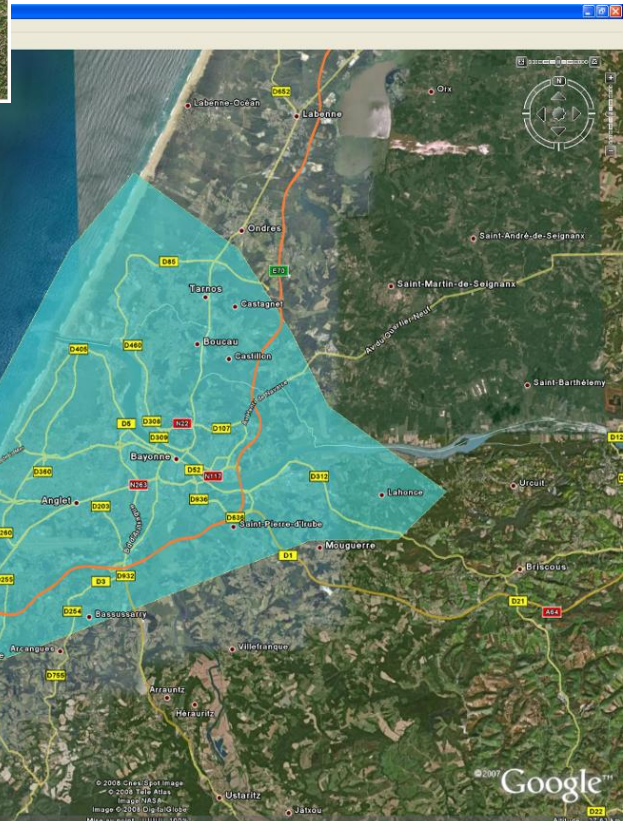
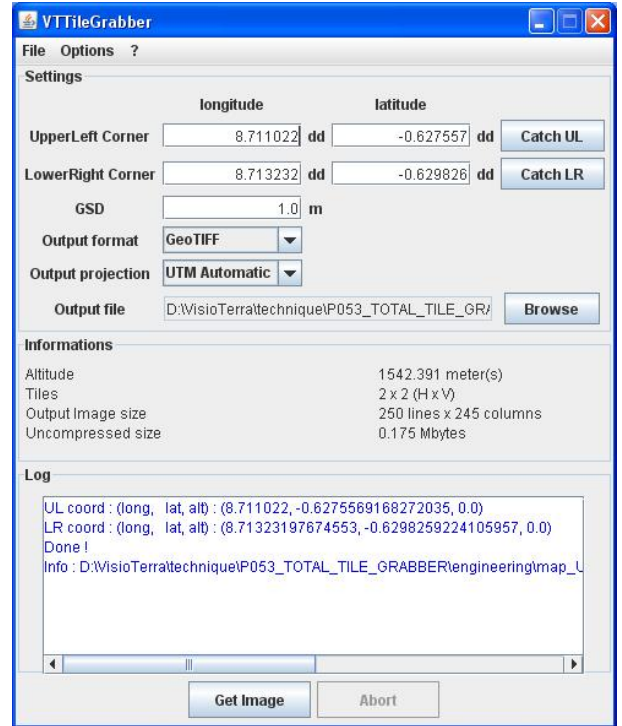
In its first release, VT Tile Grabber manages the Google Earth virtual globe. The data displayed during a session include raster and vector layers, placemarks that are provided by the user, contributors on the net or by the virtual globe itself.

VT Tile Grabber enables user to select:

- the area of interest defined by the upper-left and lower-right corners,
- the ground sampling distance (GSD) also called "spatial resolution"
- the format of the output image
- the projection of the output image
- the name and location of the output image file.

When parameter values are changed, VT Tile Grabber checks the validity of the parameters, their consistency, compute elements of the processing and features of the output file. These elements are printed in the "Informations" panel.

- *Altitude* giving at which elevation each tile will be viewed to accommodate with the desired GSD.
- *Tiles* giving the number of tiles required to capture the whole bounding box.
- *Output image size* that is an assessment of the dimensions of the file to be produced.
- *Uncompressed size* that gives the size of the output file computed from the assessed image size.



VisioTerra

14 rue Albert Einstein
77420 Champs-sur-Marne
France

tel : +33 9 61 30 66 28
fax : +33 1 64 62 08 97
GSM : +33 6 07 84 84 56

<http://www.visioterra.fr>

VT Tile Grabber

